

INVISIBLE WIRE FITTING INSTRUCTIONS

Hogarth
FINE ART ©

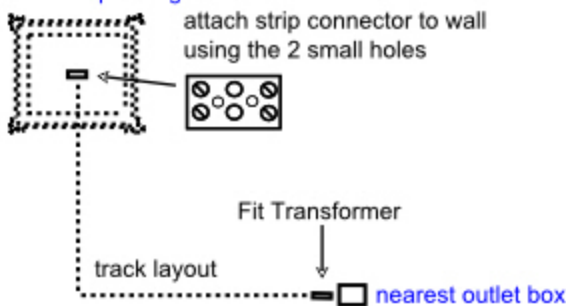
Patent No. 0001477.9.

THE HOGARTH PICTURE LIGHT PERFORMS BEST WHEN ATTACHED TO THE FRAME

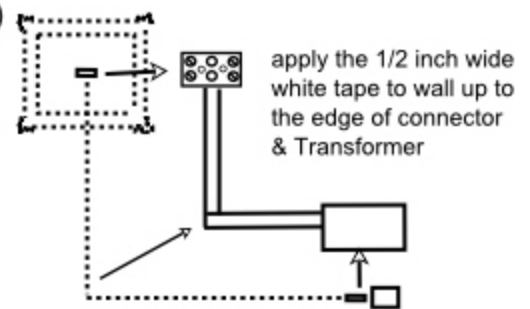
Never look directly at the LED as this can damage your eye sight

Before installing the copper track please ensure that all surfaces of the wall are clean and dry

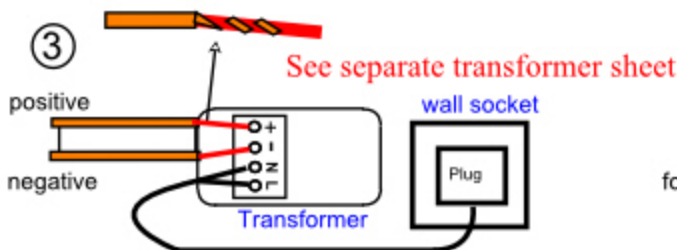
① position of painting



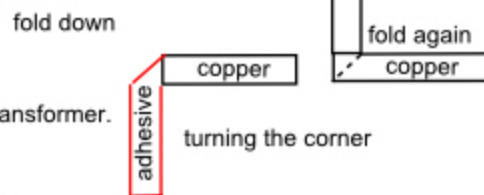
②



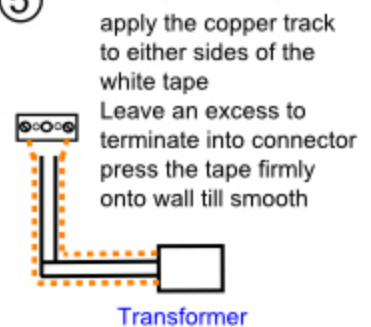
③



④



⑤



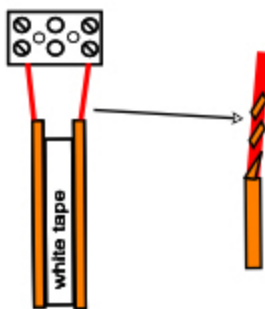
Start at transformer - roll the tape around the copper pins in transformer. The copper pins can be removed by pressing down the button

Apply the tape to the wall and up to connector box at painting.

Ensure the 2 copper tracks never touch

⑥

roll the tape around the copper pins in connector.



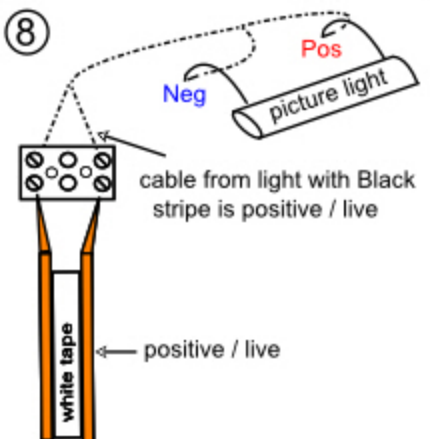
Ensure the 2 copper tracks never touch

⑦

Before continuing connect the light and test that it works. It is vital that the positive / live is correct or the light will not work

Picture light live = black stripe

⑧



⑨

Cover the tracks with the 2 inch wall tape. It does have an adhesive backing - The paper backing is difficult to peel off. Best to tear across the tape which will allow the backing to be pulled off

Decorate the wall

If the wall is painted, ensure enough coats are used to hide the tape. Painting across the tape is best

⑩

