

# CLASSIC FITTING INSTRUCTIONS

Hogarth FINE ART

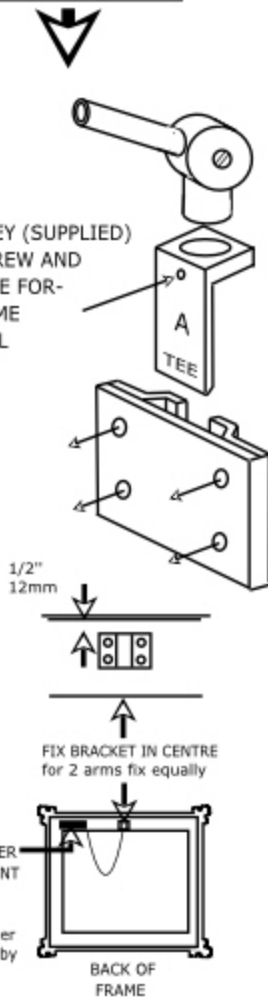
Patent No. 0001477.9.

www.hogarthfineart.com

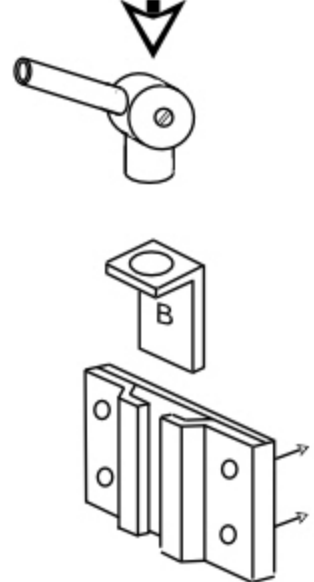
HOGARTH PICTURE LIGHTS PERFORM BEST WHEN ATTACHED TO THE FRAME  
 WARNING- DO NOT CONNECT LIGHT TO MAINS WITHOUT THE TRANSFORMER

## FIX TO FRAME

WITH ALLAN KEY (SUPPLIED)  
 LOOSEN SCREW AND  
 ROTATE TEE FOR-  
 (A) FRAME  
 (B) WALL



## FIX TO WALL



White cables from light - black line is positive/hot  
 Red cables from light - red is positive

Follow the appropriate national wiring regulations. Lights should be installed by a qualified electrician. The light should be connected to the lighting circuit, or fused at a maximum of 3AMPS.

Disconnect from the mains supply before installation, changing the bulb, maintenance.

Cleaning.  
 Disconnect from Mains supply.  
 Allow to cool down.

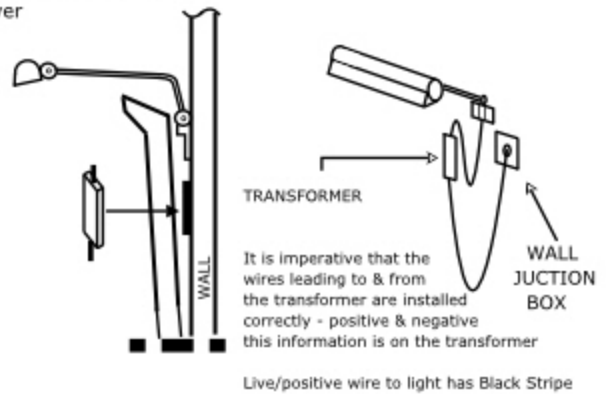
We accept no responsibility for modified lights, affects of cleaning or the accumulation of dust.

Dimmable       Do not fit to a dimmer switch

Set up to fit to  
 Frame       Wall

Keep intensity to a minimum as over brightness can effect the art work  
 Recommended levels are.  
 200 Lumen for Oils  
 50 Lumen for watercolours

Depending on the structure of the wall a wooden batten can be used



The Classic light is made to be light in weight - it is vital that the arms and swivels are loose when fitting and adjusting - if stressed the arm can fracture

Loosen Swivel screws with Key supplied and rotate light and hood to control illumination at top of frame and keep reflections to a minimum

2 small locking screws allow light to pivot

Loosen screw with Key supplied to allow hood and whole light to yaw

Light may be packaged as shown above move hood and Tee to top position

Level to 12 inches to keep reflections to a minimum use 12 inches

Undo grub screw at this position to straighten arms also use this to pivot hood

Light may be packed like this to save space in box

For lights with multiple arms - measure the central position of attachments on hood and fix the brackets on frame or wall in the same positions